

Haven Apartments



15,
Ebenezer Place
Dehiwala.



About Us

Haven properties brings you residential apartments in Colombo. Our structures are meticulously designed and expertly seen through the stage of completion to create a final piece of architecture that stands the test of time. Our projects are subjected to many quality tests from materials used to structural design to create an immaculate building. We are proud of quality construction destined to touch the highest peak of customer satisfaction. We ensure an enduring relationship with our customers by providing value for money and exceptional customer service. Haven property's transactions with each of its vendors are transparent as much as its operations and performance. We always ensure that we are there where the customers want them to be. Therefore, the company chooses locations for construction meticulously and as per client requirements. This building consists of five floors including a common roof top terrace area with roof top garden & ground floor parking facilities, each floor consists of three apartments, except 5th floor consists of 2 large apartments.

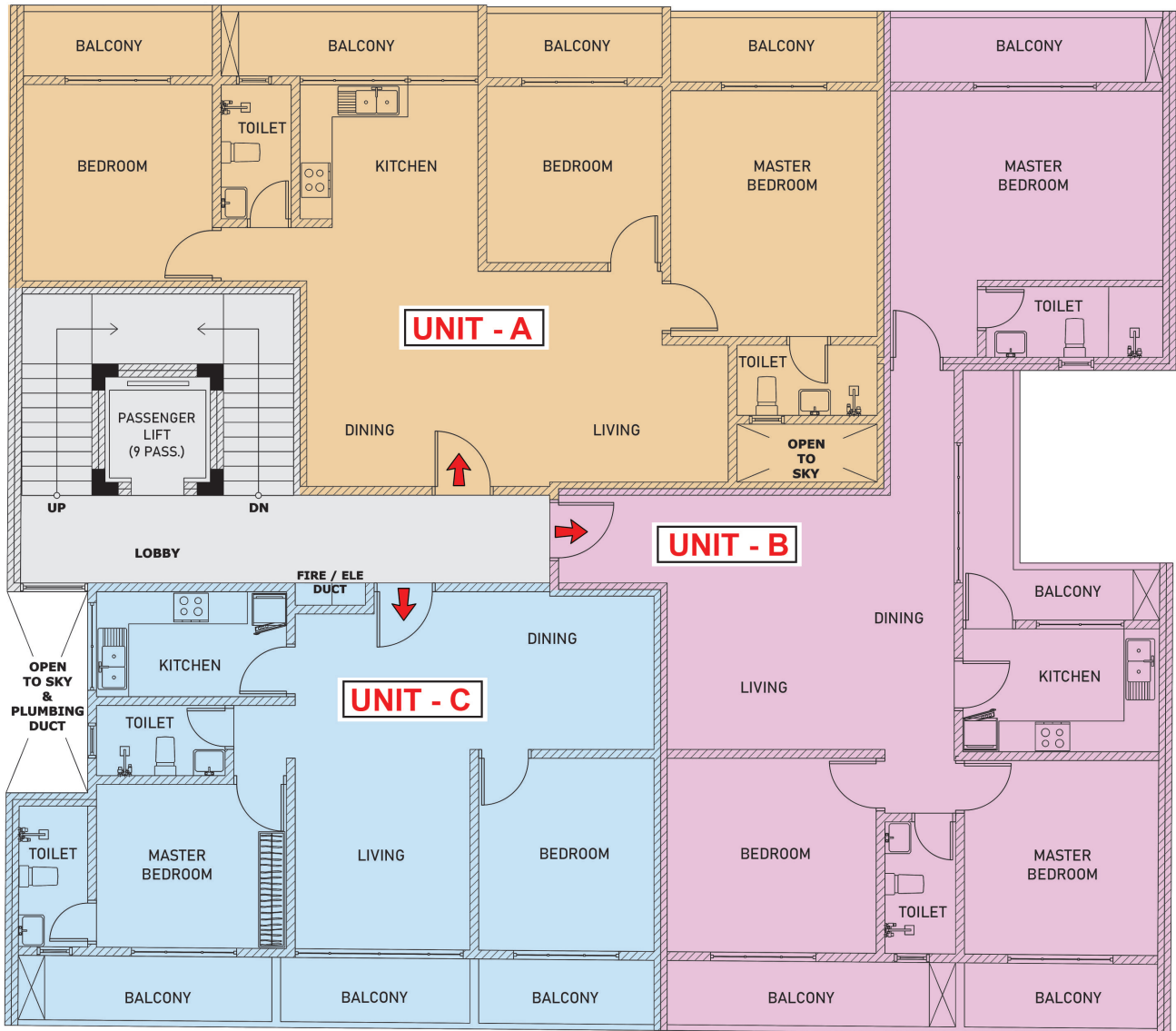
Our Mission

We at Haven strive to enhance the quality of our customers' experience by providing each of them their dream home with clear title, timely delivery and without cost escalations. We believe in providing affordable apartments and we strive to continue to be the leaders and a pioneer in the real estate scenario, setting benchmarks and being a point of inspiration to others.



Typical Floor

1st to 4th Floor



Unit **A** - 1150 Sq.ft

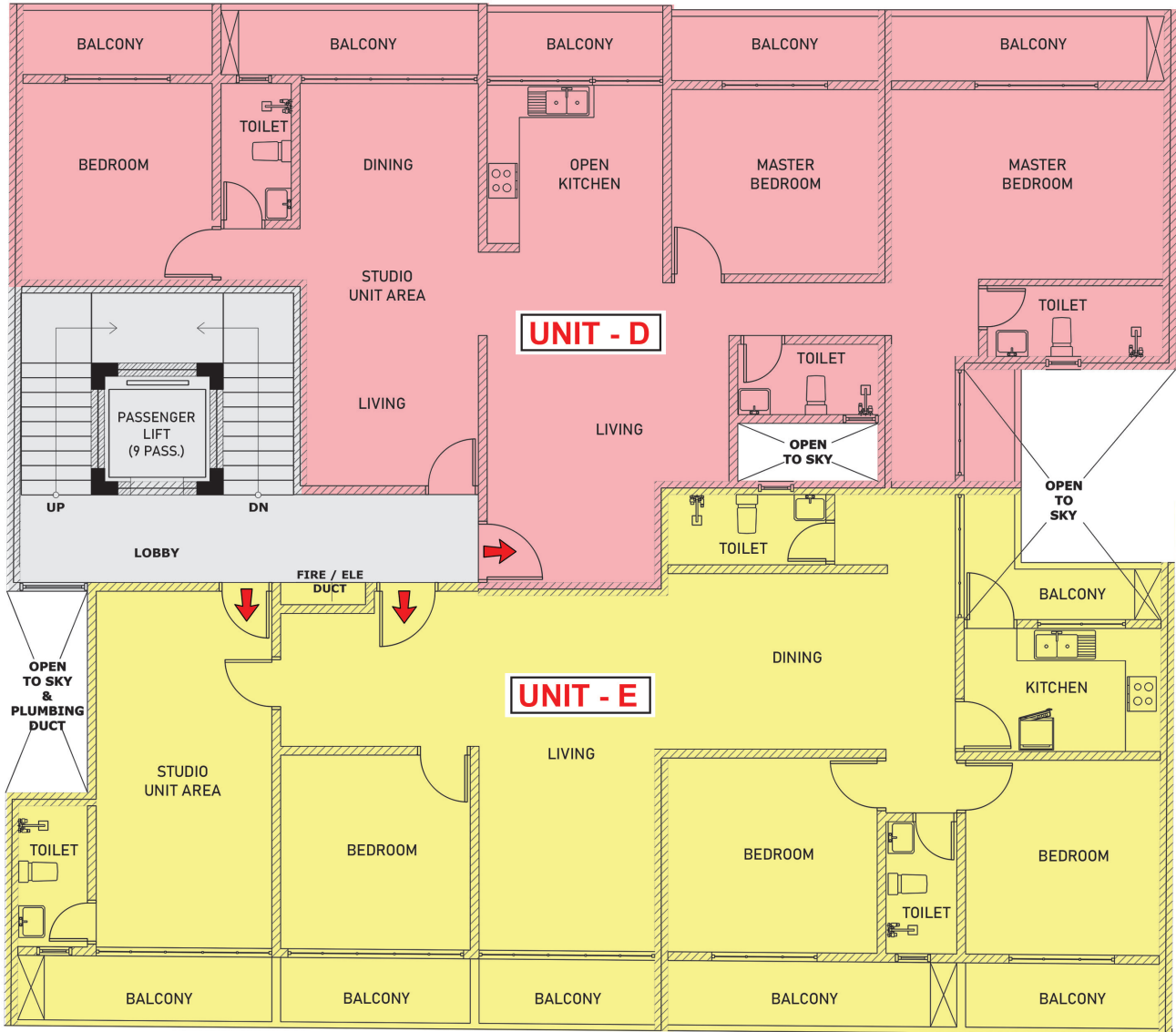
Unit **B** - 1300 Sq.ft

Unit **C** - 885 Sq.ft



Typical Floor

5th Floor



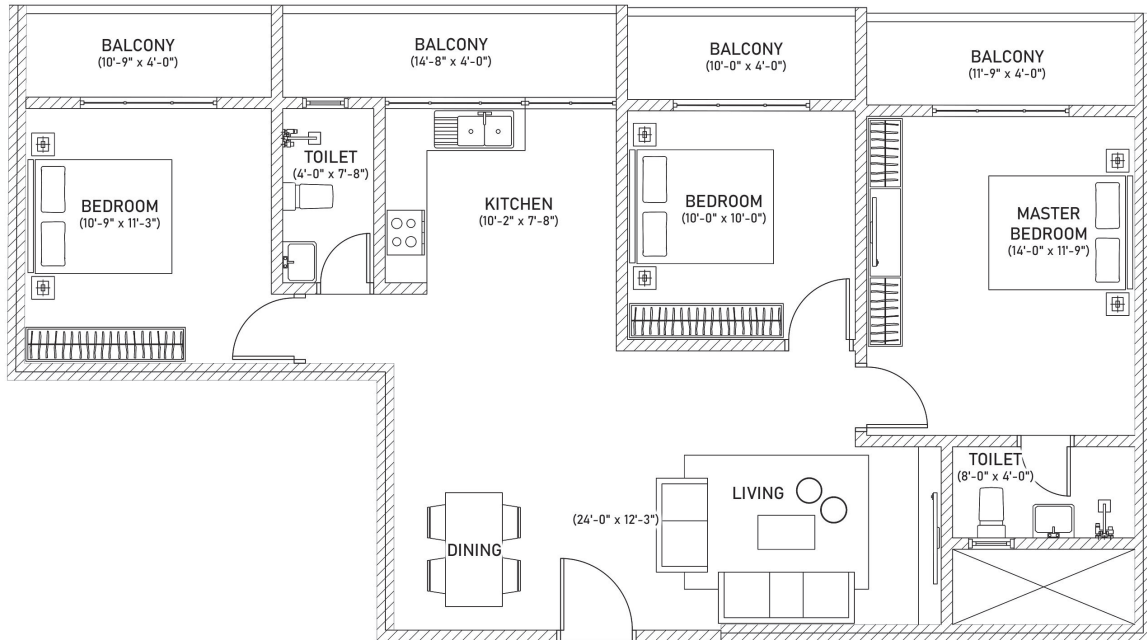
Unit **D** - 1600 Sq.ft

Unit **E** - 1750 Sq.ft

Unit

1150 Sq.ft

A



Three Bedroom Unit

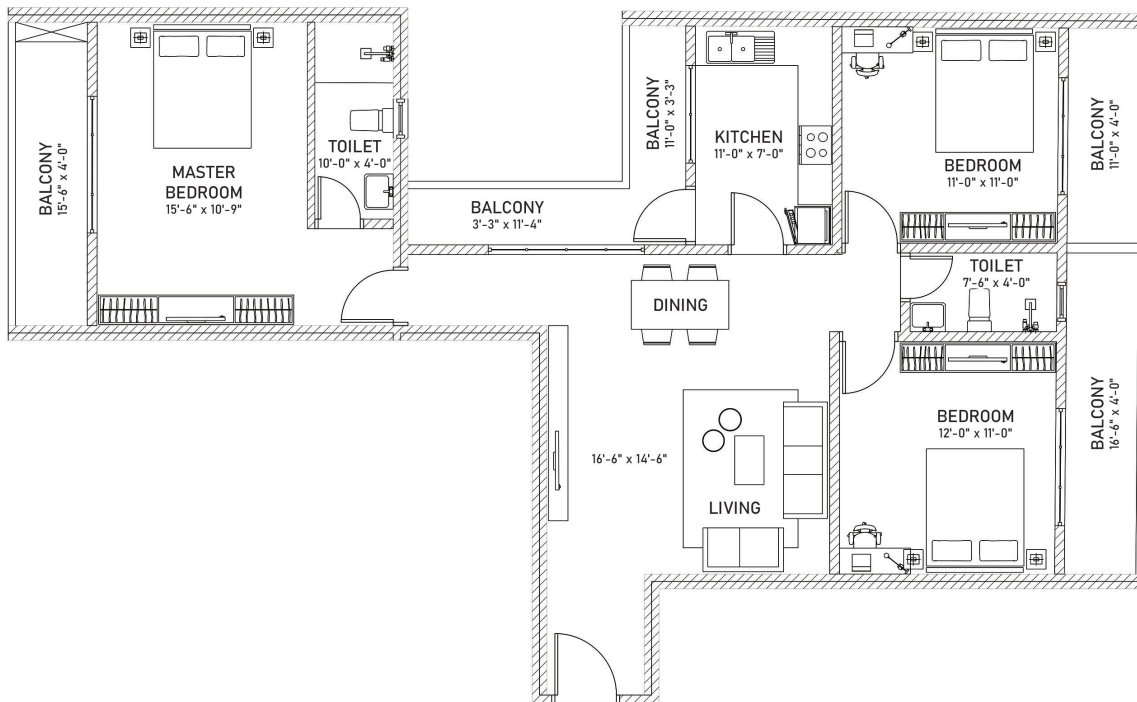
- One Master Bedroom
- Two Bedrooms
- Living Area
- Dining Area
- Modern Kitchen
- Two Toilets
- Private Balcony



Unit

1300 Sq.ft

B



Three Bedroom Unit

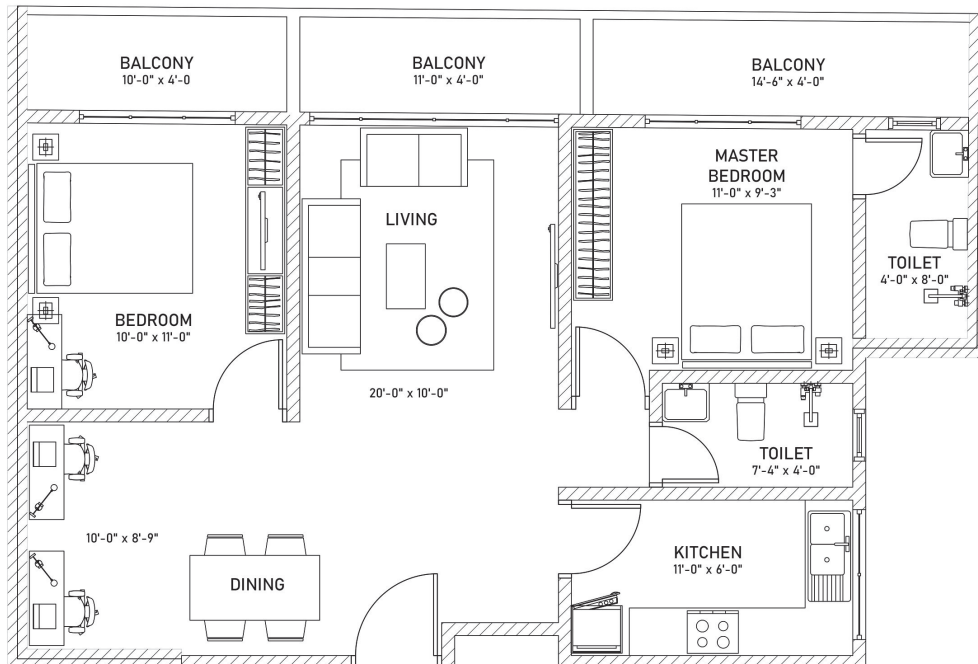
- One Master Bedroom
- Two Bedrooms
- Living Area
- Dining Area
- Modern Kitchen
- Two Toilets
- Private Balcony



Unit

885 Sq.ft

C



Two Bedroom Unit

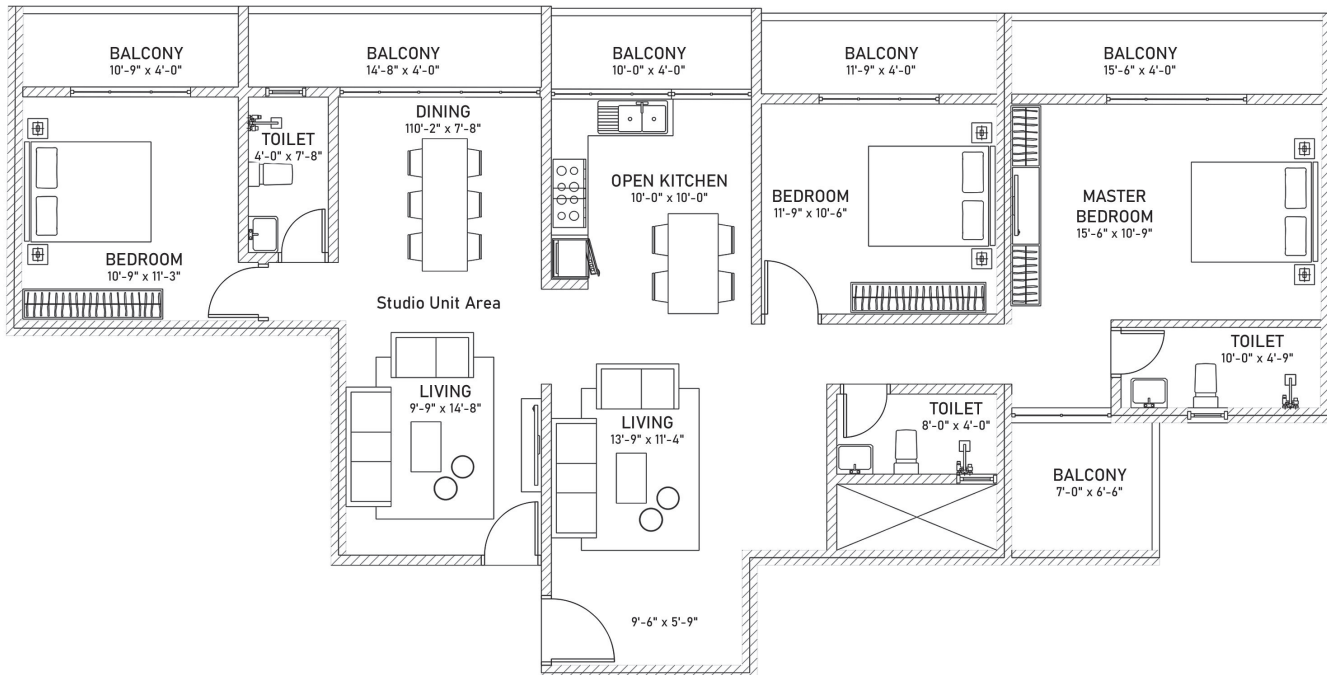
- One Master Bedroom
- One Bedroom
- Living Area
- Dining Area
- Modern Kitchen
- Two Toilets
- Private Balcony



Unit

1600 Sq.ft

D



Three Bedroom Unit

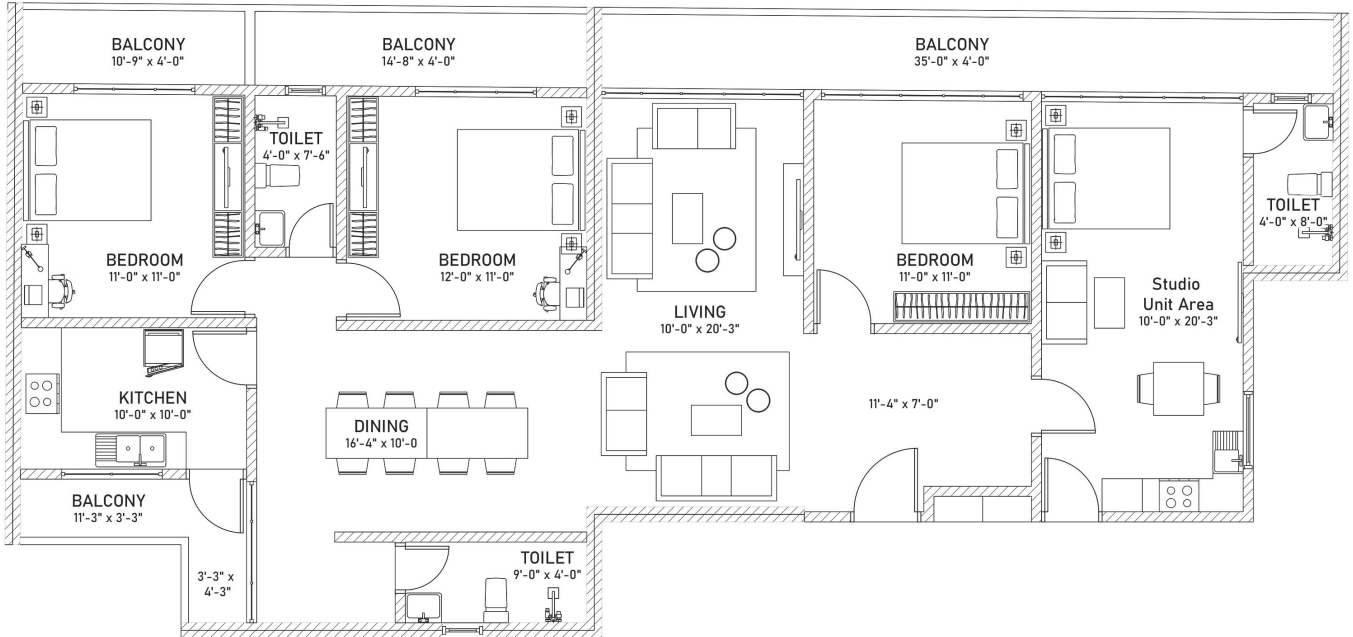
- One Studio Unit Area
- One Master Bedroom
- One Bedrooms
- Living Area
- Dining Area
- One Open Kitchens
- Three Toilets
- Private Balcony



Unit

1750 Sq.ft

E

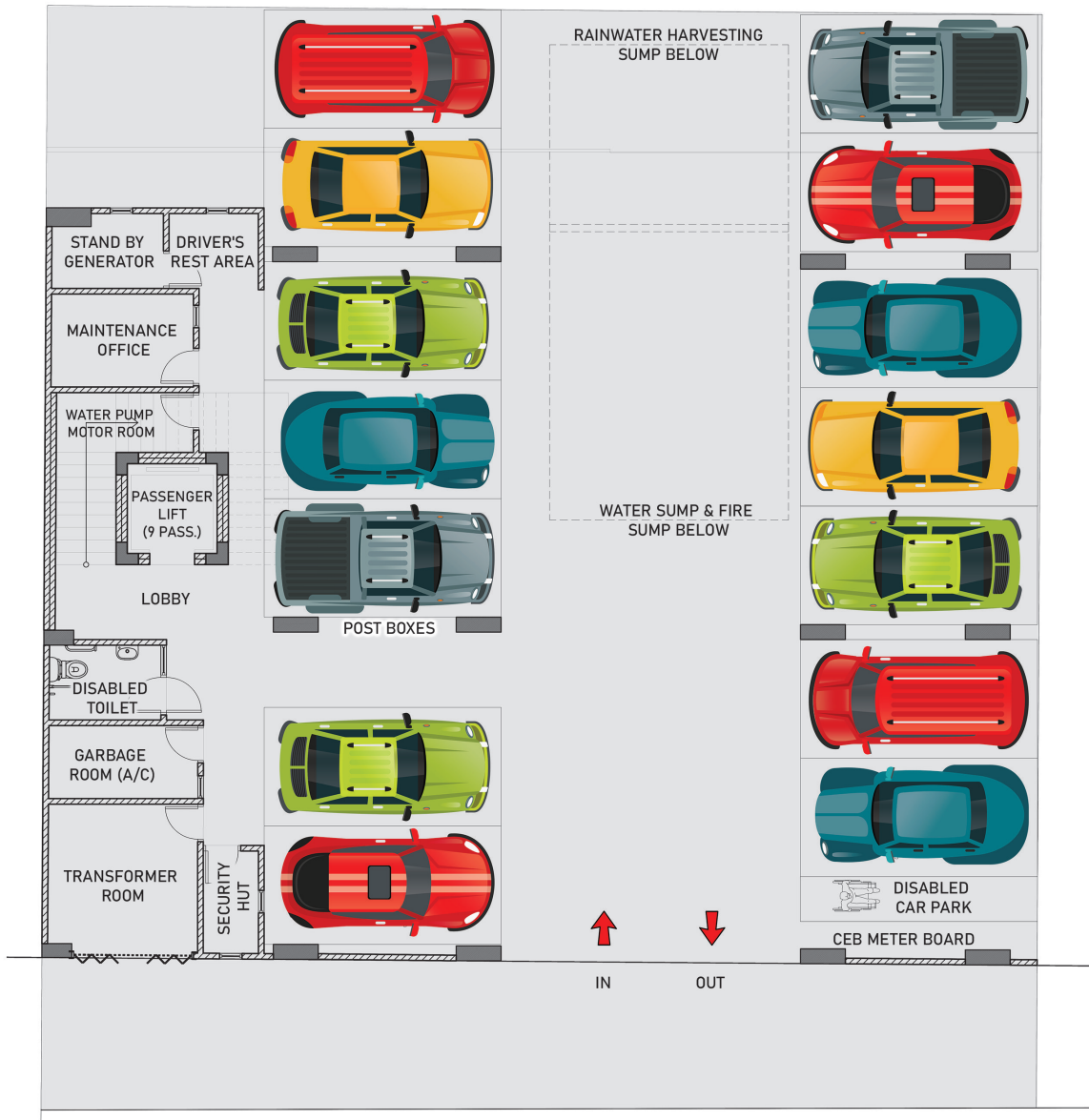


Four Bedroom Unit

- One Studio Unit
- Three Bedrooms
- Living Area
- Dining Area
- Modern Kitchens
- Three Toilets
- Private Balcony



Car Park



Car Park Unit

- 14 Car Parks
- Disabled Car Park
- Driver's Rest Area
- Stand by Generator
- Maintenance Office
- Passenger Lift
- Disabled Toilet
- Garbage Room (A/C)
- Transformer Room
- Security Hut
- Water Pump Motor Room
- Water Sump & Fire Sump
- Rain Water Harvesting Sump

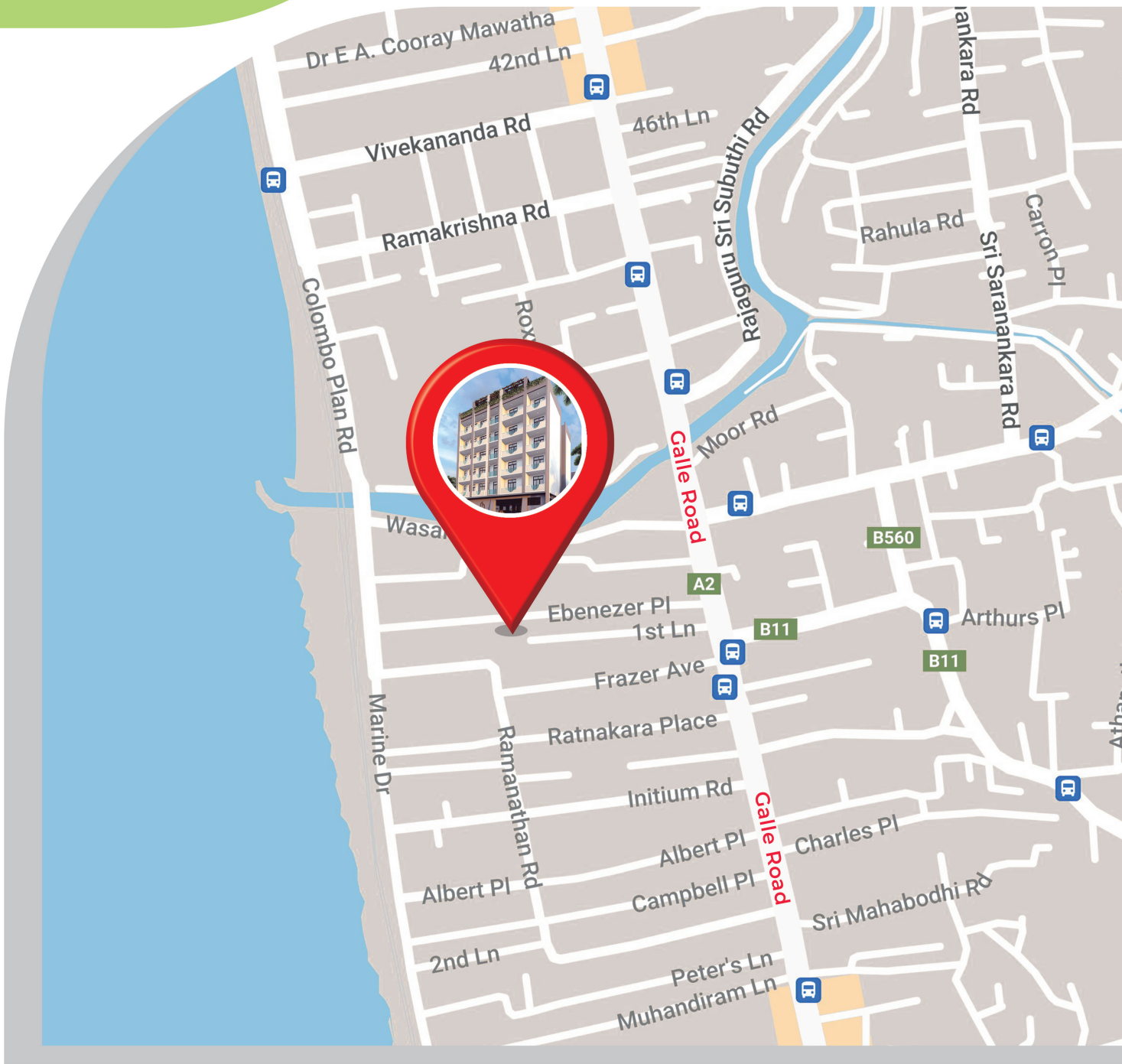


Home
interprets heaven
Home is **heaven**
for beginners.





Home is
the starting place
for
love, hope
and dreams



Our Location

This apartment building is situated at No. 15 Ebenezer Place, Dehiwela, in a tranquil peaceful highly residential as well as commercialized & well secured convenient location close to the Galle road and the Marine drive & is situated with close proximity to all main amenities, such as supermarkets, leading International & local schools, also close to banks, hospitals, places of worship, the post office, the railway station, golden sandy beach, zoological garden, several resort hotels & restaurants etc. It is only about fifteen minutes' drive to the Colombo city centre & close to most of the towns in & around



Haven Homes

15, Ebenezer Place,
Dehiwela, Sri Lanka.

E : info@haven.lk

W : www.haven.lk

For further details & reservation

Mr. Ranjan : +44 7459 730 810

Mr. Seyanthan : +94 7694 299 18

